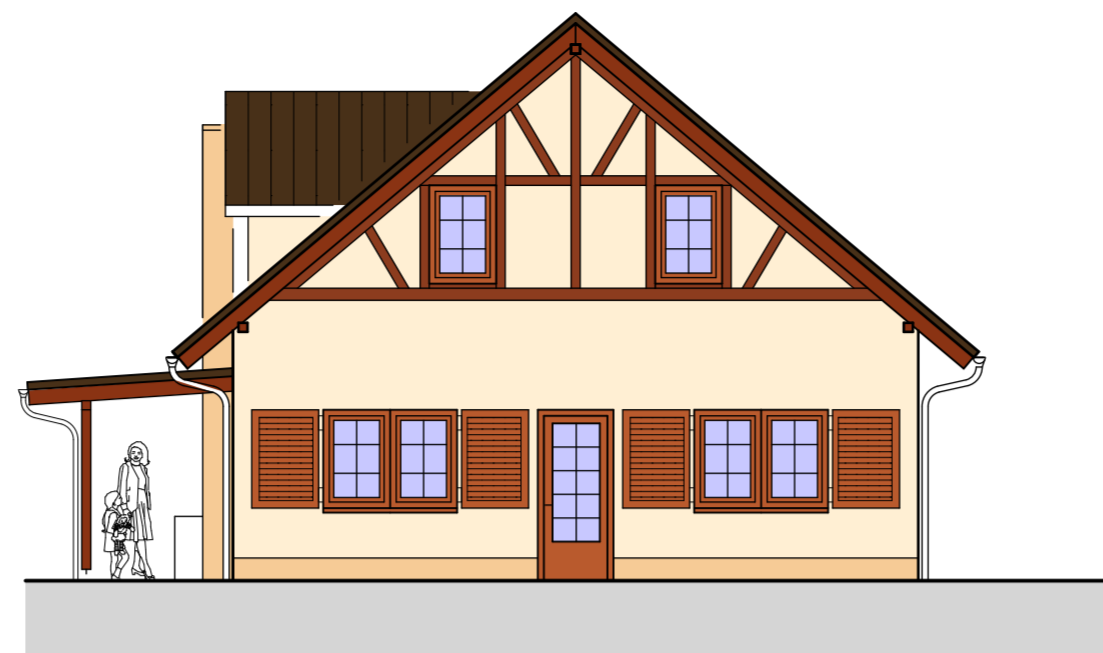
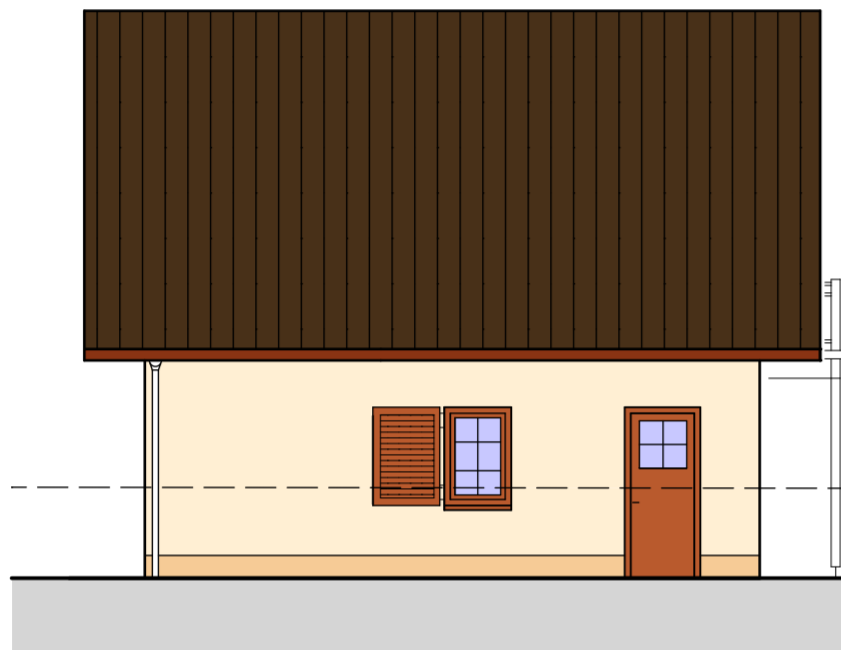


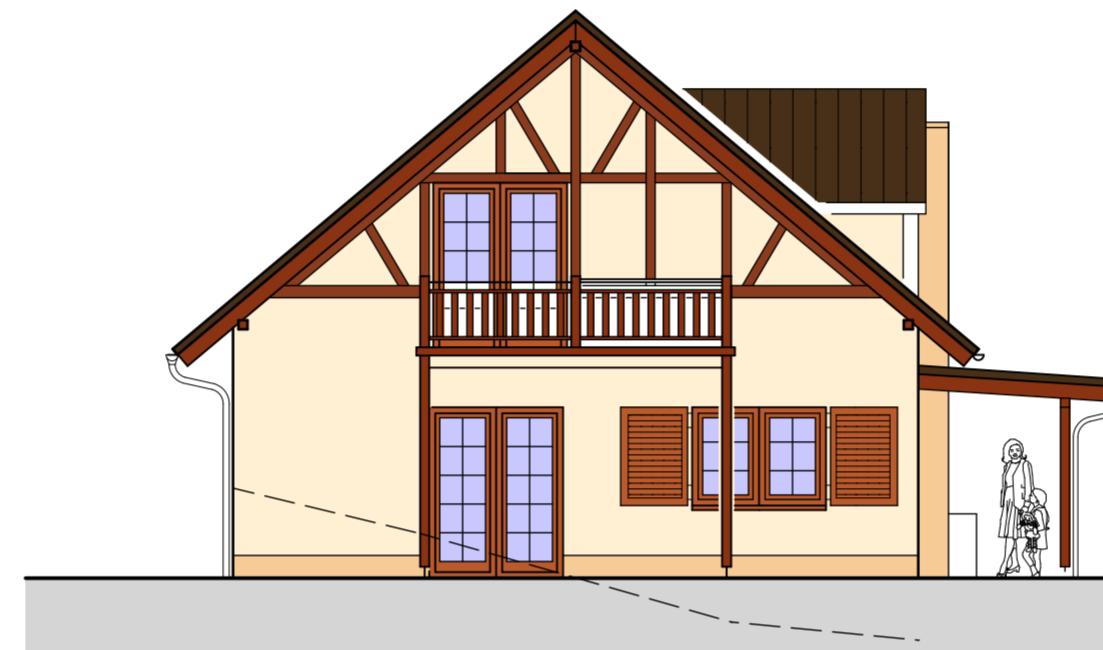
ANSICHT SÜD



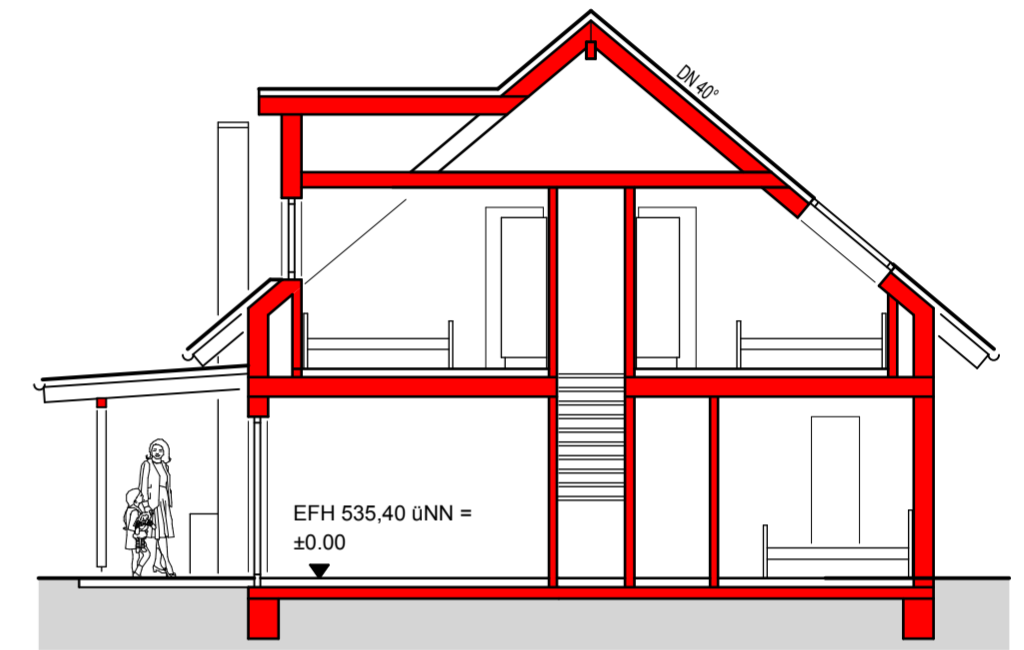
ANSICHT EINGANG



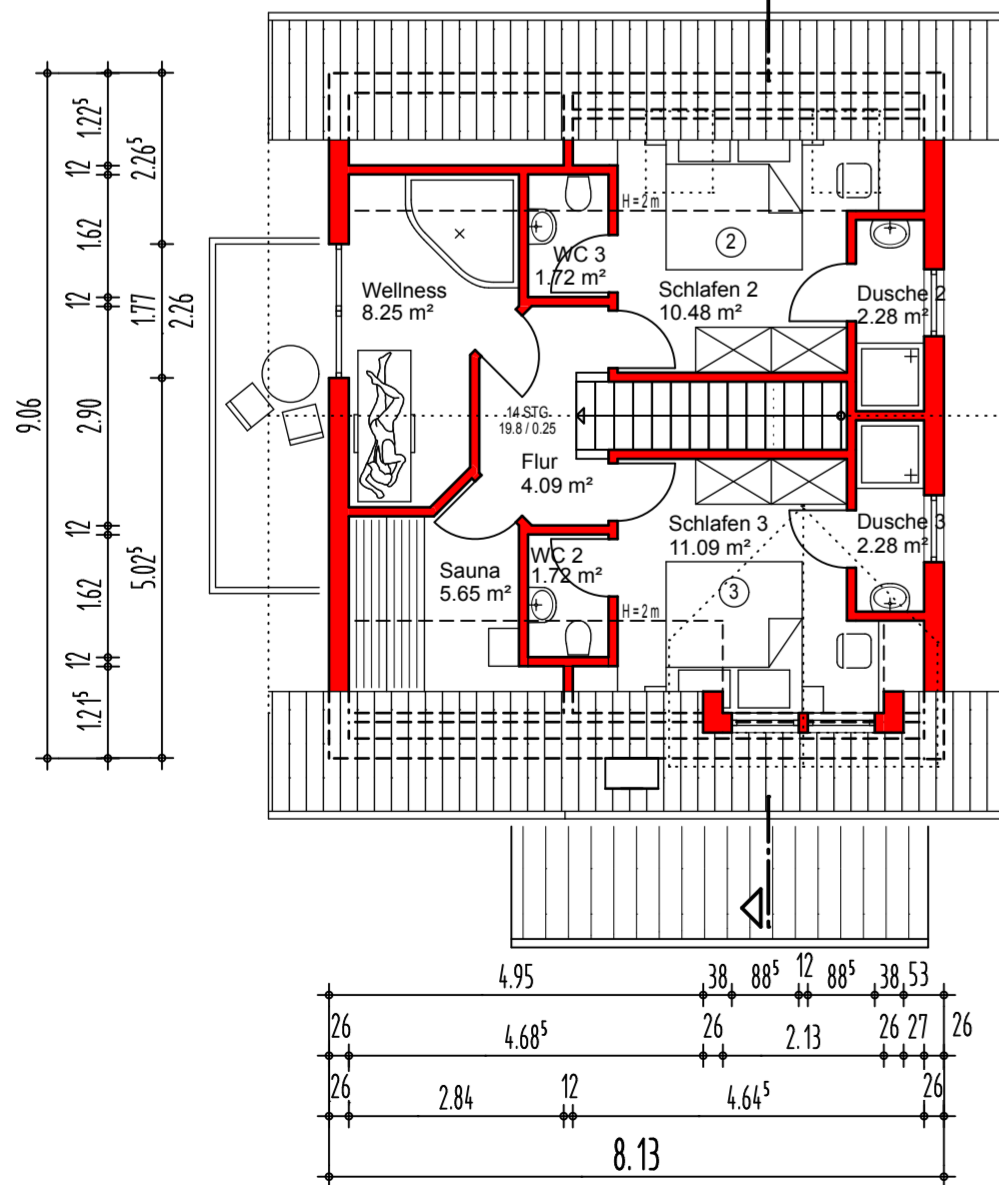
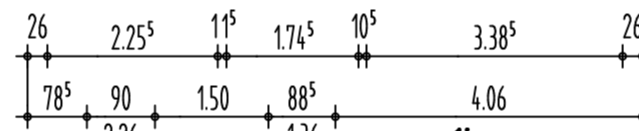
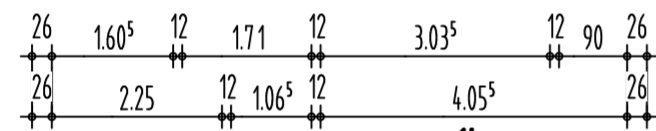
ANSICHT NORD



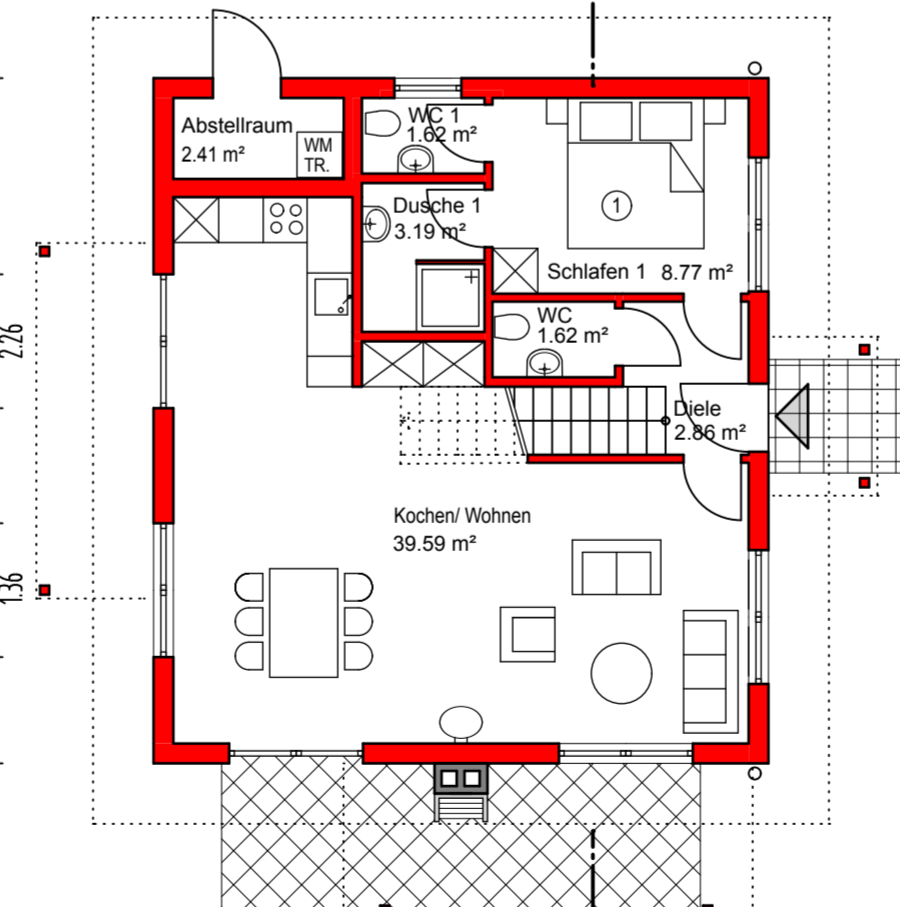
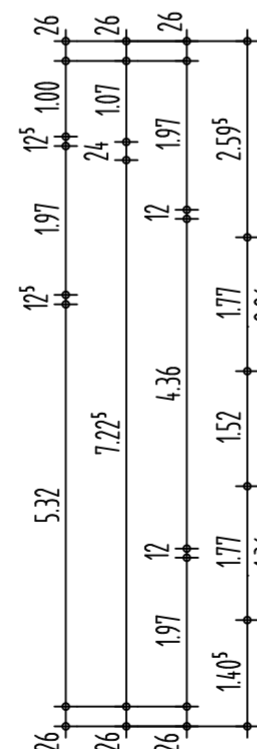
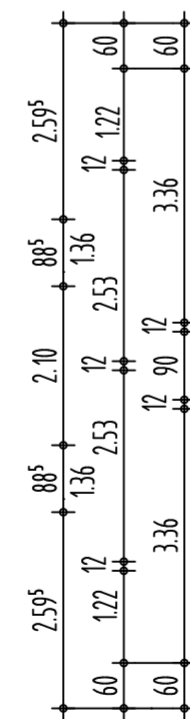
ANSICHT GIEBEL



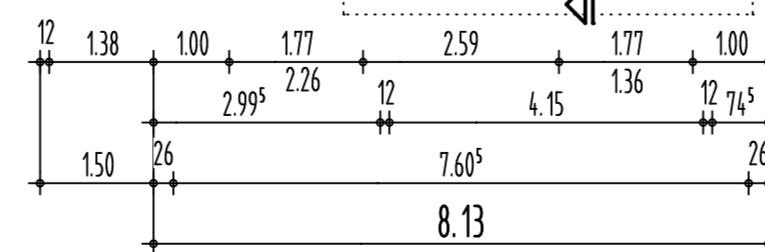
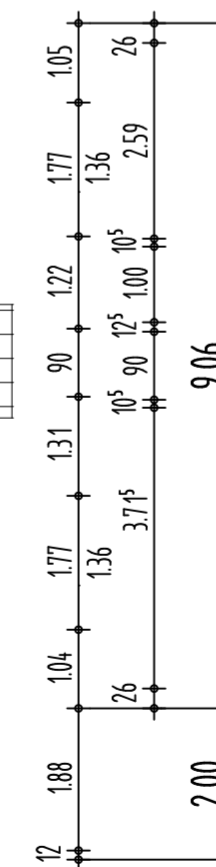
SCHNITT



DACHGESCHOSS



ERDGESCHOSS



Kall, ??.03.2009
Entwurfsverfasser

Kölner Straße 25 · D-53925 Kall		
Telefon +49(0)2441/9990-0 · Fax 9990-40 info@pe-becker.de · www.pe-becker.de		
Bauherr	Henk Vossen, EuroResorts Gravenkasteel 29, NL-6028 RK Gastel	
Bauvorhaben	Standard Haus Linda, 6 Personen Ferienpark Kronenburger See, Zum Kleebusch 15, 53945 Dahlem-Kronenburg	
Sachbearbeiter	Scheer	Plan-Nr. E6
gezeichnet	Datum: 29.04.2009 Zeichen: BS	
geändert		Maßstab: 1 : 100 36.125-H-